

Specifications of Manage Cube PC Record

As of August 2022

Product name	Manage Cube PC Record Appliance Model
Dimensions	W 154 mm x D 108 mm x H 32 mm
Weight	1.03kg
Power supply	19V,65W DC power supply adapter
Processor	Intel Celeron Processor
Memory capacity	4GB
Storage	64GB(eMMC)
LAN interface	10 / 100 / 1000 Base × 1
USB port	2(USB2.0), 2(USB3.0)
Operating temperature	0℃~40℃
Other remarks	Standard 3-year warranty
	First-out sendback

*The specifications are subject to change without notice.

*This product is operable with Microsoft Windows.

Supported OS (clients)

As of August 2022

Microsoft Windows 11 Home	Microsoft Windows 10 Enterprise LTSC
Microsoft Windows 11 Pro	Microsoft Windows 8.1
Microsoft Windows 11 Enterprise	Microsoft Windows 8.1 Pro
Microsoft Windows 11 Education	Microsoft Windows 8.1 Enterprise
Microsoft Windows 10 Home	Microsoft Windows Server 2022
Microsoft Windows 10 Pro	Microsoft Windows Server 2019
Microsoft Windows 10 Enterprise	Microsoft Windows Server 2016
Microsoft Windows 10 Education	Microsoft Windows Server 2012 R2
Microsoft Windows 10 Enterprise LTSC	Microsoft Windows Server 2012

Developer / Exclusive distributor
Actworks Co., Ltd.

Fukusyoosaka Bld, 8th Floor, 1-10-14,
Kyomachibori, Nishi-ku, Osaka, Japan
Opening hours: Weekdays 9:00-18:00

+81-6-6444-2550

Mail service@actworks.ne.jp
<https://actworks.ne.jp/en/>

Contact

Manage Cube PC Record

Integrated Management System

Visualize PC operations



Record Prevent information leak

Restrict Device control

Manage Screen sharing, multi-screen display

Actworks Co., Ltd.

Manage Cube **PC Record**

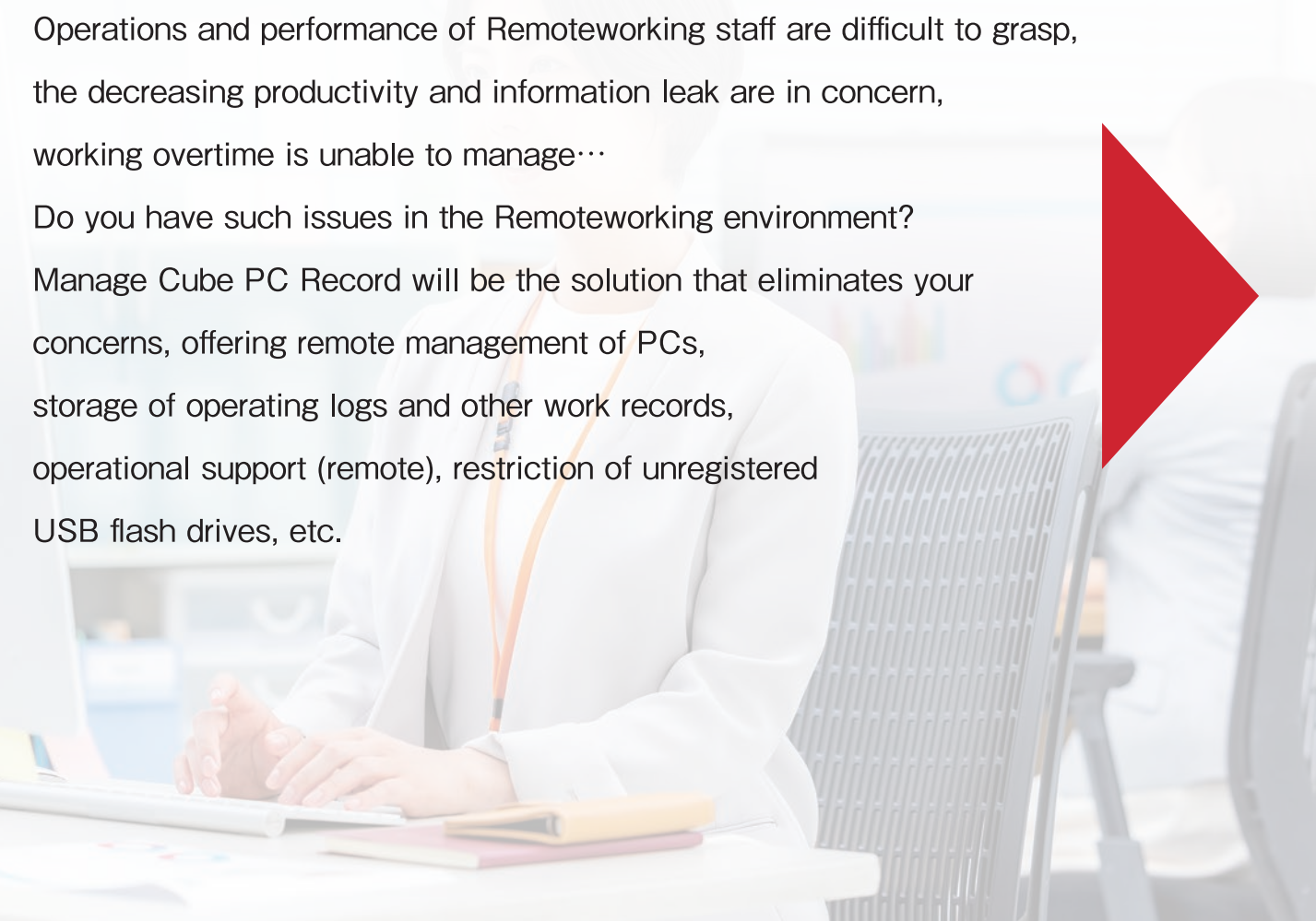
Integrated Management System

Visualize PC operations

Operations and performance of Remoteworking staff are difficult to grasp, the decreasing productivity and information leak are in concern, working overtime is unable to manage...

Do you have such issues in the Remoteworking environment?

Manage Cube PC Record will be the solution that eliminates your concerns, offering remote management of PCs, storage of operating logs and other work records, operational support (remote), restriction of unregistered USB flash drives, etc.



List of available functions

Record	Record operation logs and videos of client PCs.	
	Menu	Operation logs Monitoring/capturing
Restrict	Restrict printing, Web browsing, and the use of USB flash drives.	
	Menu	Usage restriction/policy
Manage	Offer management of introduced client PCs by powering on/off, remote control, multi-screen display, as well as information acquisition and asset management.	
	Menu	Powering on/off Remote control Information acquisition Asset management Message distribution Event log management Registration/configuration Maintenance

Record

Operation logs

Record client PC's operating status

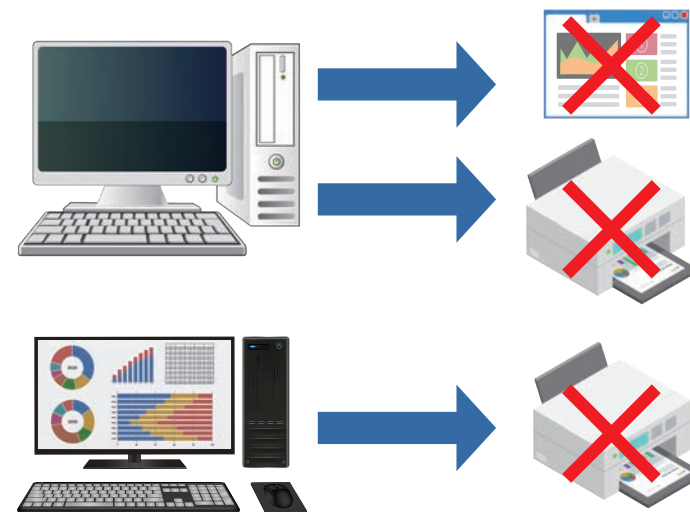
Operations such as application launch, file handling, device handling, and printing will be recorded.



Printer/Web restriction

Port block for each client PC

Port block setting enables restrictions on Web browsing and printing.



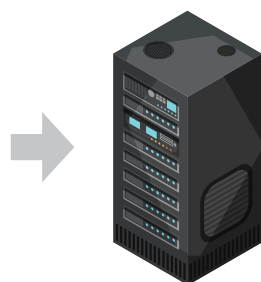
Video recording

Keep videos of client PC operations

The client PCs will be captured in a video by selecting a trigger out of "when logging on", "when detecting an alert", and "when operating PC".



Record always when the PC is operated



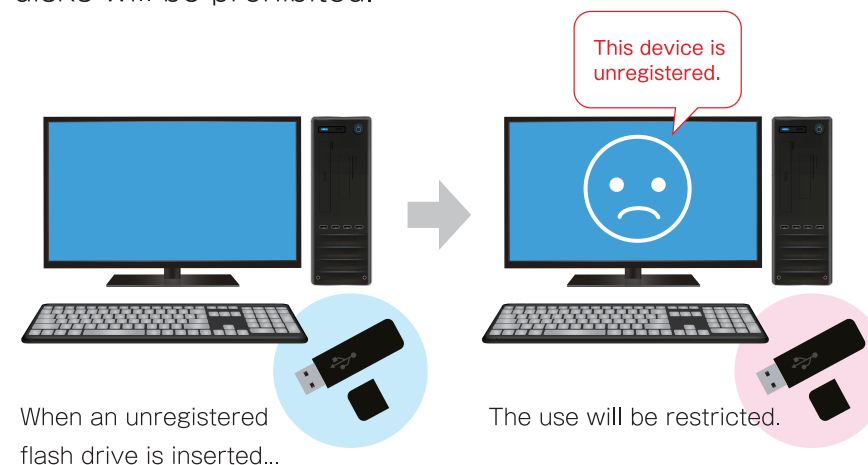
Regularly stored in the network server or NAS



Device control

Prohibit using unregistered flash drives, etc.

The use of unregistered flash drives and removable disks will be prohibited.



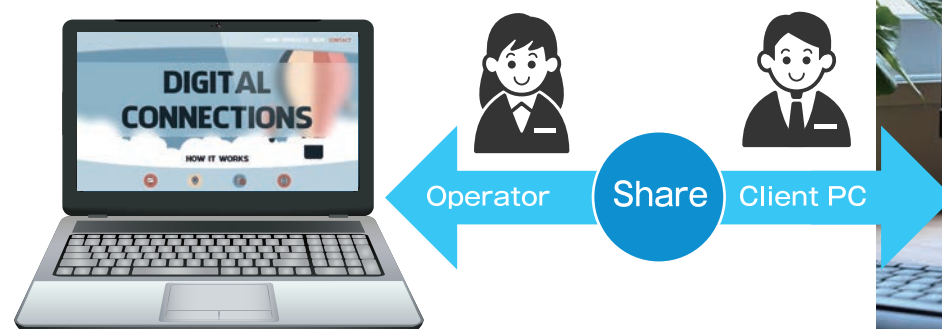
Manage

Remote access

Share client PC's screen

The screens of client PCs will be shared with an operator.

*Base-to-base connection / VPN connection is required.



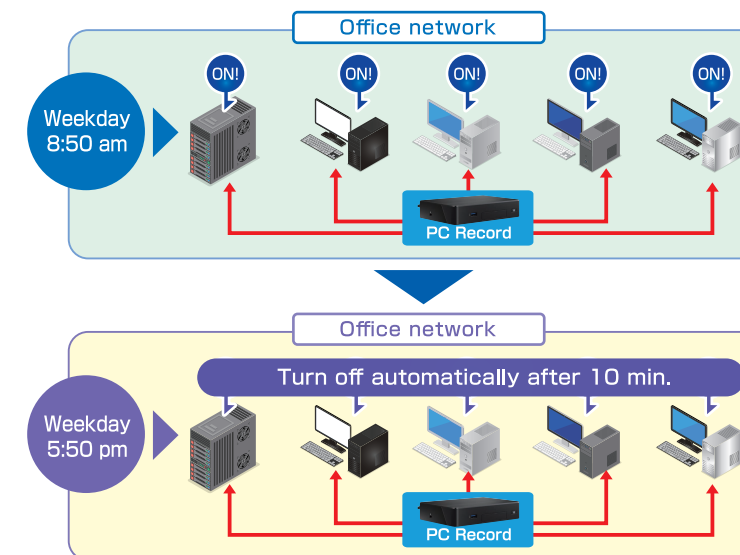
Solve the problem and improve work efficiency by sharing the client PC's screen with an operator!



Power control

Power on/off all client PCs

Turn all of the client PCs on/off at the same time with an optional scheduling function.



Multi-screen display

Manage multiple client PCs together

The screens of multiple client PCs will be displayed in one monitor.

(up to 48 or 126 screens can be displayed according to resolution)

*Base-to-base connection / VPN connection is required.

